



Nouvelle Version 5

+ COMPLETE

+ COLLABORATIVE

+ USER FRIENDLY






GeoVISION® enables to **extract, process** and **present** all data coming from APAGEO'S data loggers :

- **P**ressuremeter data with GeoSPAD® and GeoPAC® / HyperPAC®
 - Drilling data with EXPLOFOR®
 - **D**ynamic test with APADYN®
 - Permeability test with LugeoTEST®

4 licences available

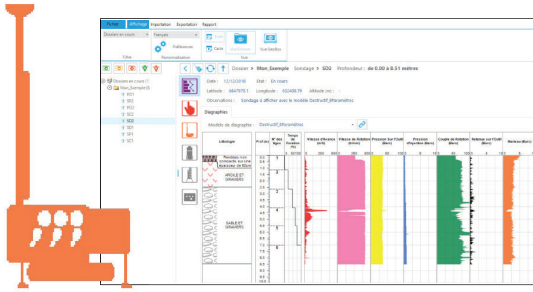
	GeoVISION® P	GeoVISION® F	GeoVISION® D	GeoVISION® L
Tests / Data	Pressuremeter test	Drilling data	DPSH test, SPI Test Compaction control	Permeability test
Standards	ISO 22476-4		ISO 22476-2 NF P 94-063	ISO 22282-3 NF P 94-131
Benefits	<ul style="list-style-type: none"> • double hyperbolic method included • pseudo-elastic range selection • optimized process of cyclic tests 	<ul style="list-style-type: none"> • activity management • calibration test, free fall test 	<ul style="list-style-type: none"> • personalized complete report of a work site • selection of penetrometer type • automated calculation of QD 	<ul style="list-style-type: none"> • automatic and manual insertion of Lugeon test
Basic Features				
Manual data input	Integration of pictures , images, texts or values of geotechnical data			
Diagraphy	Personalization of diagraphies (colors, legends, layout...)			
Personalized report	Personalization of reports			
Available in several languages	French - English - Spanish			

GeoVISION®5 INNOVATIONS

	New interface : extremely user friendly
	Geolocation of connected GeoBOX®, real time access to work, instant chat with connected GeoBOX® (4G option).
	Automatic update (according to user license)
	Single or multiple users
	Survey points position on the map

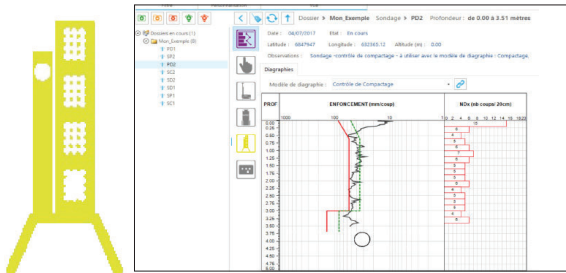


4 DIFFERENT MODULES FOR 4 TYPES OF GEOTECHNICAL DATA



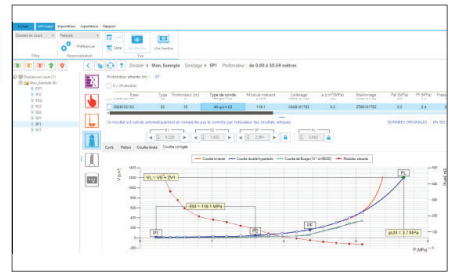
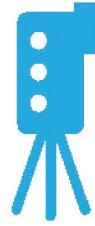
DRILLING APPLICATION

- Import and format
- Generation of drilling data reports



PENETROMETER APPLICATION

- Import and analysis
- Generation of test results in accordance with **NF P 94-115** (DPSH), **NF P 94-063** (compaction control), and **NF EN ISO 22476-3** (SPT) standards
- In compaction control mode, suggestions for anomalies and the conformity or non-conformity of the survey point



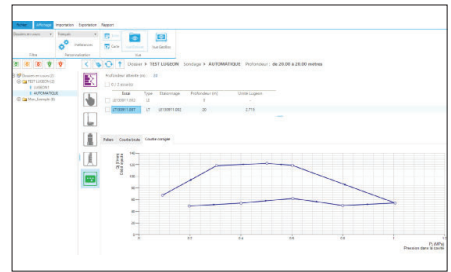
PRESSUREMETER APPLICATION

- Import and analysis
- Generation of pressuremeter test results (including cyclic and special tests according to **NF EN ISO 22476-5**)
- Double hyperbola method
- Pseudo-elastic range adjustment according to **NF EN ISO 22476-4**

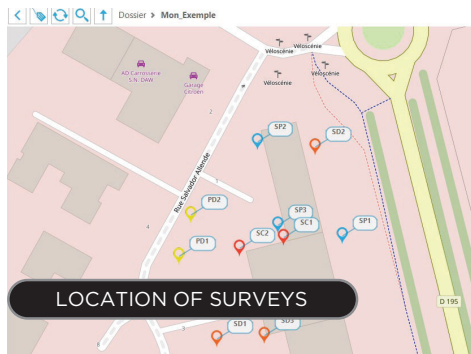


LUGEON APPLICATION

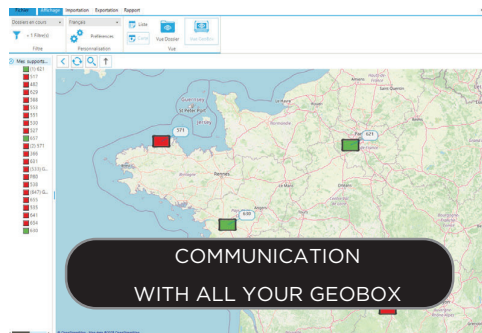
- Import and calculation
- Formatting and generation of reports related to Lugeon **NF EN ISO 22282-3** test data



AND A COMMON BASE WITH, AMONG OTHER THINGS, FUNCTIONALITIES SUCH AS:



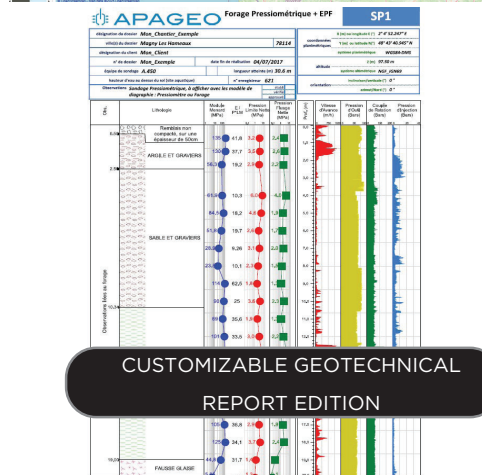
LOCATION OF SURVEYS



COMMUNICATION WITH ALL YOUR GEOBOX

PROFONDITEUR (m)	DESCRIPTION GÉOLOGIQUE	PROFONDITEUR (m)	PROFONDITEUR (m)	PROFONDITEUR (m)
0.00	Argile molle plastique brune grise	0.00	0.00	0.00
0.50	Argile brune grisâtre plastique	0.50	0.50	0.50
1.00	Argile molle plastique brune grise comportant des lentilles d'argiles siliceuses plus durables	1.00	1.00	1.00

MANUAL ENTRY OF GEOTECHNICAL DATA



CUSTOMIZABLE GEOTECHNICAL REPORT EDITION