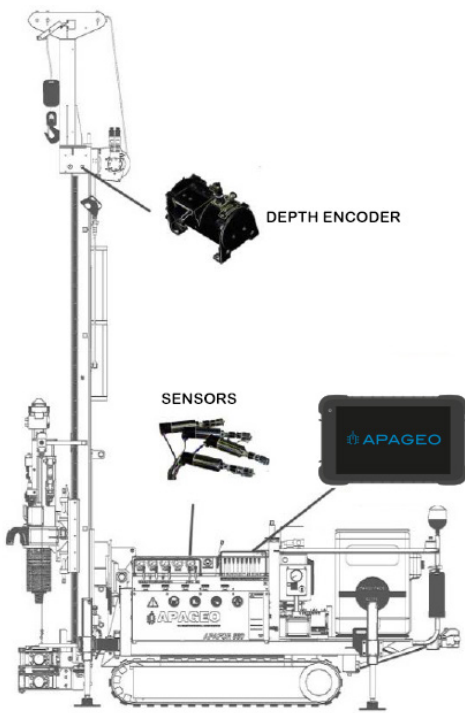


# ExploFOR<sup>4</sup>®

### General presentation

Like previous versions, **EXPLOFOR<sup>4</sup>** enables the **recording of drilling parameters**, during the drilling process to collect real time information on the soil profile. It also allows to record, according to time, the different activities of the site (core recovery, cementing, various breakdowns, etc...) in order to analyze the execution time of each activity. It also allows to carry out cavity searches (vacuum) as **Free Fall Tests (FFT)** by measuring and recording the free-fall descent along the depth of the sounding.

**EXPLOFOR<sup>4</sup>** is a **highly advanced edge equipment** that centralizes drilling data right through the central unit GeoBOX<sup>®</sup>. The equipment is compact and is installed quickly on the drill rig.



**EXPLOFOR<sup>4</sup>** is made of :

- Robust and innovative depth encoder :
- Junction box mounted on the drilling rig for centralized connection of EXPLOFOR<sup>®</sup> sensors and communication with GeoBOX<sup>®</sup> via WIFI. It allows data acquisition and drilling activities according to time.
- 3 pressures sensors drilling hydraulic pressures acquisition (more sensors in option)

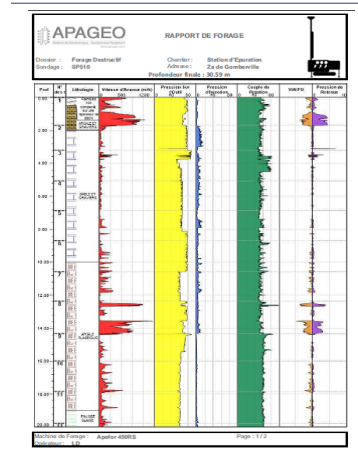
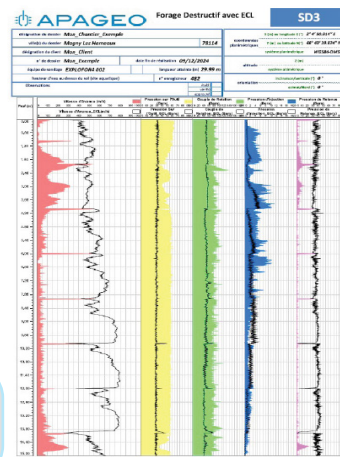
The central unit Geobox<sup>®</sup> and accessories are sold separately.



**EXPLOFOR<sup>4</sup>** records the following parameters :

- Advance rate (depth and penetration speed)
- Torque of the rotary head
- Pushing force (thrust) on drilling bits
- Injection pressure of drilling fluid
- Optional: VIR<sup>®</sup> - a rotation speed sensor, holding pressure, flow, GPS...

Possibility to use the same data acquisition system to register drilling parameters from Explofor4 and penetrometer parameters from Apadyn



Data from **EXPLOFOR<sup>4</sup>** can be processed directly using our geotechnical data processing software **GeoVISION<sup>®</sup>**.

## Implementation

**1** Set up the equipment **EXPLOFOR® 4** on the drilling rig.

**2** Enter the drilling parameters in **GeoBOX®** and launch the data acquisition.



As soon as the equipment **EXPLOFOR® 4** is connected to the drilling rig (hydraulic connection, depth encoder on the mast, optional sensors connected, etc...), GeoBOX® orders the record of drilling data through WIFI or with wiring cable.

**3** Follow the drilling profile in real time on GeoBOX®. Print or save data on a usb key. Transfer data to the office via 4G system (option).



Data can be instantaneously watched on the screen until the desired depth is reached. At the end of the drilling, results can be printed on GeoBOX® mobile thermal printer (Premium version) or sent to the office via 4G (option).

## Options

- VIR® (Rotation speed sensor) : drill head rotation speed with remote display
- Flowmeter.
- Onboard GPS for localization of sounding position.
- Extra pressure sensors with various measuring range : 10, 20, 60, 100 or 400 bar.
- Digital inclinometer to control the inclination of the mast.

**EXPLOFOR® 4** is 100% compatible with your existing EXPLOFOR® sensors and depth encoder